

POLYRAMPE



DESCRIPTION

- 230V power supply
- Up to 10 solenoid outputs
- 0-100% speed regulation
- Front, back and safety limit switch input
- Metering input (sectorisation) encoder / plot
- Variable drive fault input
- Manual mode using the switches on the front
- 1 communication bus to the variable drive
- 1 Ethernet port
- 1 embedded web site for programming and manual mode from a mobile support

VARIABLE DRIVE BOX

The Polyrampe only operates using the variable drive box

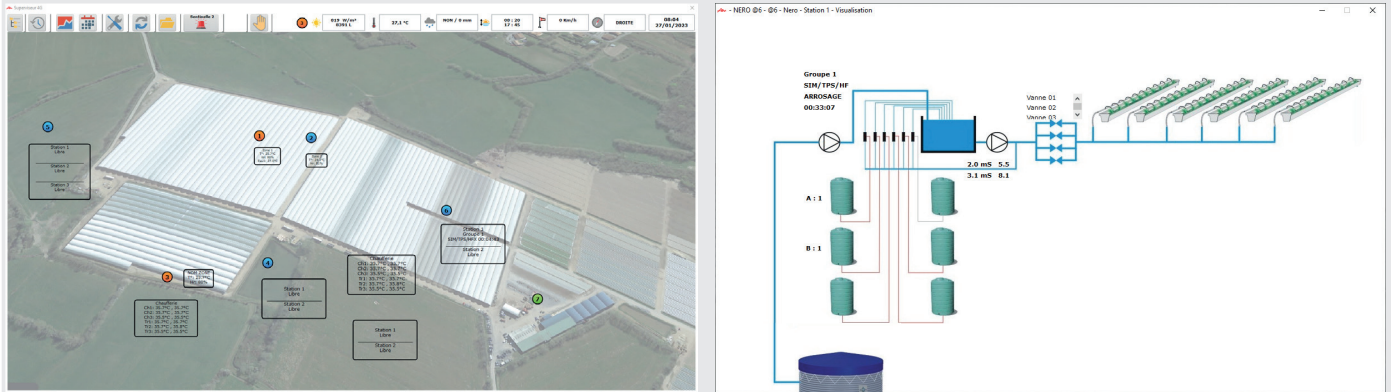


- 2x10A main switch
- N+6A circuit breaker
- ATV12 0.37kW variable drive
- Marked connection terminal block
- Set of cable glands
- To be installed next to the cart motor

POLYRAMPE

REMOTE ACCESS

Compatible with Supervision



using Sentinelle CLI1690

Compatible with embedded website

using 4G BOX - CLI1666