

# POLYPROG 12



## EXTENSION

1st 12-channel extension module, relay output to switch from 12 to 24 channels, supplied in a box with 24Vac transformer.

### PRO1220

Next expansion module, 12-channel relay outputs (maximum 48 channels per POLYPROG 12 programmer).

### PRO1221

Control module for 8 motors / fertiliser channels.

### PRO1222

## DESCRIPTION

- 12 standard solenoid valves with extension possible up to 48
- Pump/motor relay control.
- Possibility of managing 8 extra pumps
- 12 irrigation groups
- 3 irrigation stations available
- 1 pause input to suspend irrigation
- Management of a Solar meter
- 6 analogue inputs: 3 temperature and 3 hygrometry / tensiometer
- Management of 3 dry contact inputs
- Up to 12 valves operated simultaneously

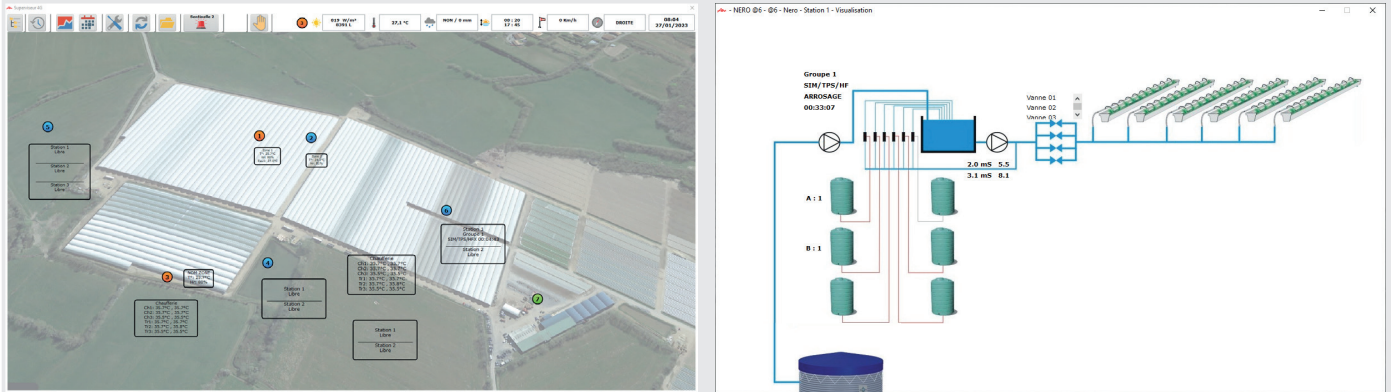
## FUNCTIONS

- Manual start-up of a group
- Independent time per valve
- Valve time setting to the second (Simple mode)
- Sequential programming
- Filling, irrigation and rinsing step (Expert mode)
- Group start-up modes:
  - Set time
  - Cyclical
  - Calendar
  - Solar meter
  - Dry contact
  - Analogue
  - Safety

# POLYPROG 12

## REMOTE ACCESS

### Compatible with Supervision



using Sentinelle CLI1690

### Compatible with embedded website display

using 4G BOX - CLI1666