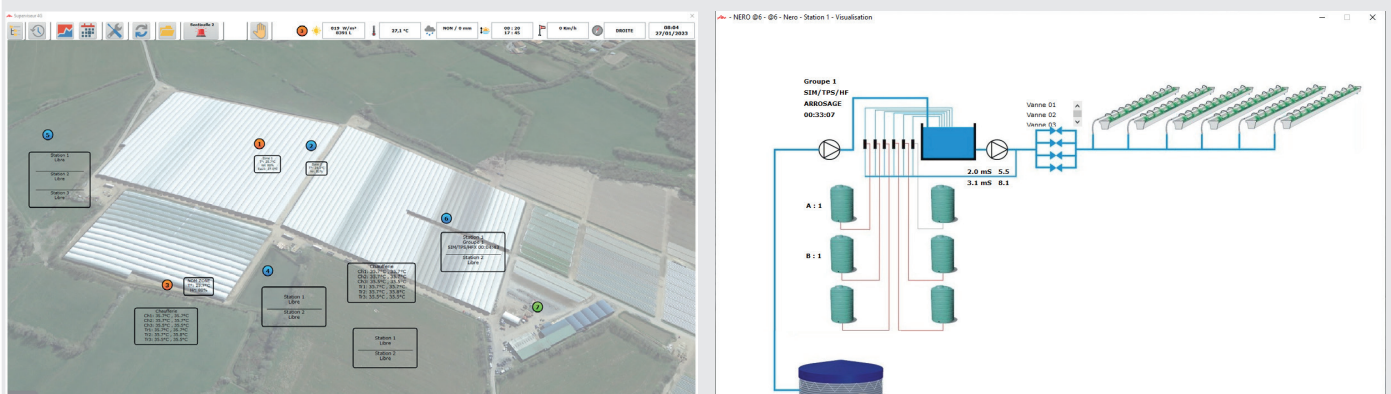


DESCRIPTION

- Management of 3 fertilisers and 1 acid
- EC / PH control with the Venturi version
- Digital sensor calibration
- EC / PH alarm management + 1 alarm relay
- Pump relay output
- Regulation started on 2 ON-OFF inputs (2 set point groups)
- Possibility of a 0-10V interface to manage 2 variable speed dosing pumps
- Possibility of management by Solar meter with EC modification based on sunshine

REMOTE ACCESS

Compatible with Supervision



using Sentinelle CLI1690