



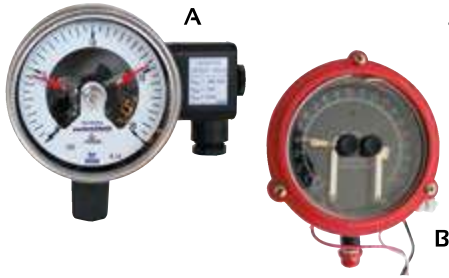
Pressure switches



- For high or low pressure safety system

Pressure switch 10-30 bars	IRI0070
Pressure switch 4-17 bars	IRI0071
Pressure switch 1-10 bars	IRI0069

Pressure switch with pointer



- Weatherproof, moulded aluminium case, diameter 114 mm.
- Measurement display and 2 adjustable thresholds on dial. Output on 2 changeover contacts, measuring 0/25 bar.

(A) Pressure switch with pointer 0/25b	IRI0072
(B) Pressure switch with pointer OPLFC 0/20b	IRI0073

Level relay



- 1 or 2 thresholds
- 400 V or 230 V power supply
- Electrode not included

Level relay, AAN077, 2 thresholds	IRI0081
Level relay, AAN077, 1 threshold	IRI0082

Electrode level gauge



- Inox

Electrode level gauge	IRI0085
-----------------------	----------------

Float with 5-meter cable



- Level water control with dry output contact

Float with 5-meter cable	IRI0083
--------------------------	----------------

MICRO START - startup plc (single product : stator / star-triangle)



- Adjustable startup timer
- Adjustable pressurisation time
- High and low pressure safety system management
- Integrated remote control
- LED mimic panel (faults, startup, LP, HP)

Micro Start	IRI0093
Automate Start	IRI0103

ALIM START - 400/24 VAC power supply unit



- Protection by fuse + integrated varistors

Power supply ALST01	IRI0095
Power supply ALST15	IRI0105