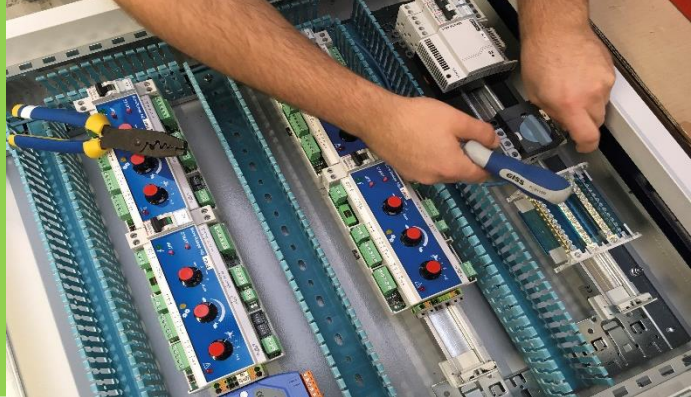


C1MA/SA



Description

- Inverter box
- Box containing a circuit breaker + inverter contact
- 380V box power supply
- Open / Stop / Close switch
- Possibility of a 220V power supply
- BUS mode connection
- Possibility of serially connecting several C1MA boxes
- Available with several circuit breaker sizes:
 - 0.25/0.4A
 - 0.4/0.63A
 - 0.63/1A
 - 1/1.6A
 - 1.6/2.5A
 - 2.5/4A
 - 4/6.3A

880 rue Léo Baekeland
85290 Mortagne sur Sèvre- France
+33 (0)2 02 51 63 02
contact@anjouautomation.fr

 **Anjou
Automation**
L'innovation est notre culture